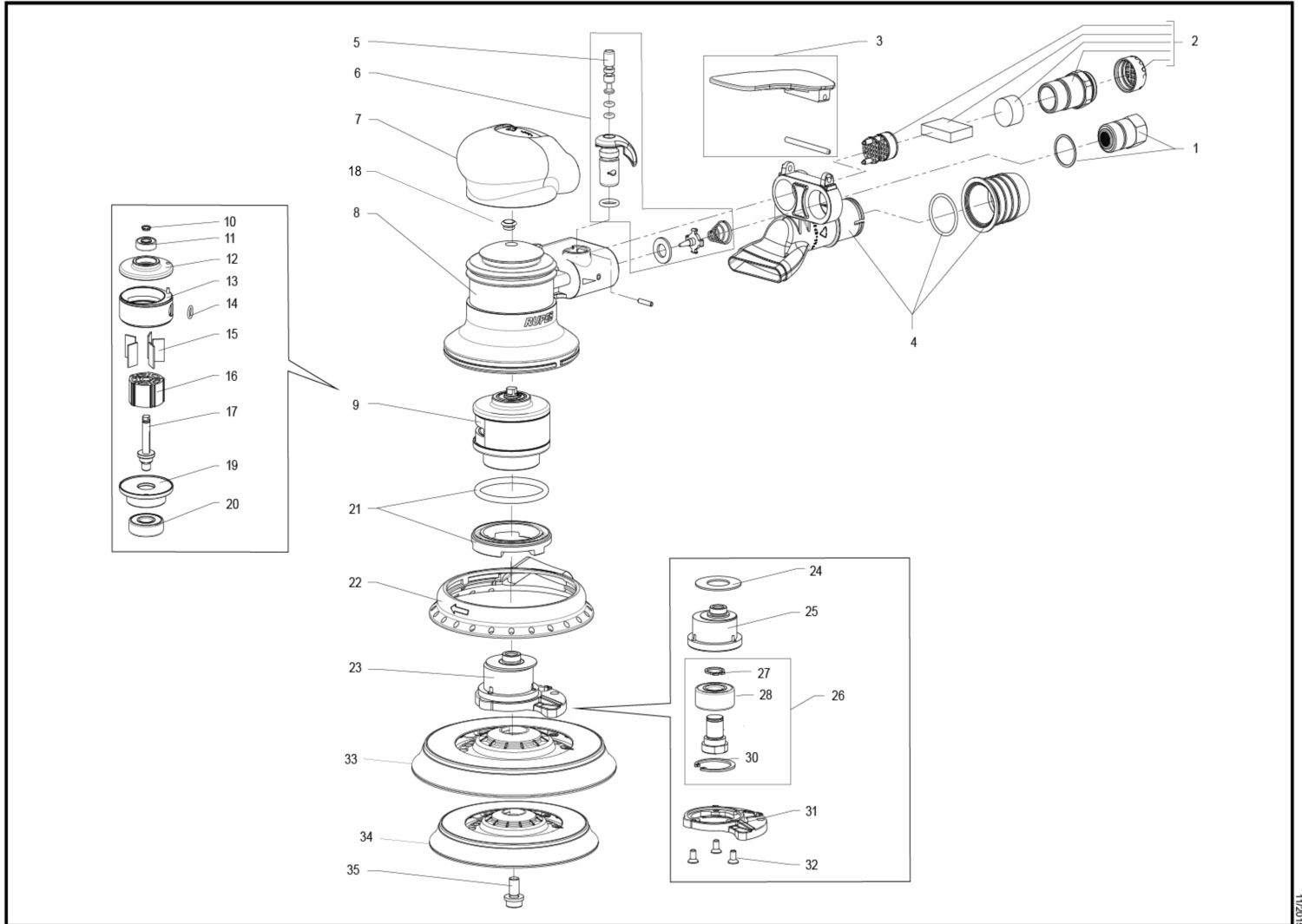


LEVIGATRICI ROTORBITALI PNEUMATICHE CON ASPIRAZIONE
 PNEUMATIC RANDOM-ORBITAL SANDERS WITH DUST EXTRACTION

RH353A - RH356A - RH359A
RH323A - RH326A - RH329A



ID	ITEM	DESCRIPTION
001	43.330/C	AIR ENTRY CONNECTOR
002	431.364/C	SILENCER GROUP SKORPIO II
003	381.365/C	LEVER GROUP SKORPIO II Ø 9mm
003	381.364/C	LEVER GROUP SKORPIO II Ø 6mm
003	381.363/C	LEVER GROUP SKORPIO II Ø 3mm
004	42.330/C	VACUUM CONNECTOR GROUP RH SERIES
005	381.330/C	PIN VALVE RH
006	30.330/C	COMPLETE VALVE GROUP
007	81.330/B	BLACK RUBBER CAP SKORPIO III
008	31.330/C	COMPLETE MOTOR BODY
009	10.364/C	COMPLETE MOTOR SET
010	9.148	SEEGER FOR SHAFT 7mm
011	9.34/10	BEARING SKF 607 ZZ-C3
012	28.364	Upper Motor Head
013	20.340	MOTER CYLINDER
014	9.2001	O-RING 2031
015	18.364/10	Set 10 vanes Skorpio III 1,45 x 11 x 19,92mm
016	10.364	ROTORE ACC. SINTERIZZATO SKORPIO III
017	51.364	DRIVESHAFT SKORPIO III
018	9.1820/10	TAPPO per foro Corpo Skorpio
019	27.364	LOWER MOTOR HEAD.
020	9.25/10	BEARING
021	55.330/C	series RH MOTOR FIXING COMPLETE GEAR
022	65.330	RUBBER SHROUD RH series
023	58.365/C	ECCENTRIC ASSEMBLY (9mm orbit)
023	58.364/C	ECCENTRIC ASSEMBLY (6mm orbit)
023	58.363/C	ECCENTRIC ASSEMBLY (3mm orbit)
024	70.364	FELT WASHER
025	58.365	BALANCER 9mm ORBIT
025	58.364	BALANCER 6mm ORBIT
025	58.363	BALANCER 3mm ORBIT
026	56.364N/C	COMPLETE RAM PIN GROUP
027	9.102	SEEGER d 12 TIPO E DIN 471 CR3 PHOSPHATE
028	9.189/10	BEARING 3001 12-28-12
030	9.5017	SEEGER RING
031	57.365	COUNTERWIGHT SKORPIO II 9mm
031	57.364	COUNTERWIGHT SKORPIO II 6mm
031	57.363	COUNTERWIGHT SKORPIO II 3mm
032	9.609	SCREW M4 x 8 T.S.P. BURNISHED
033	981.500/5	BOX 5pcs. Ø 150mm PAD VELCRO MULTIHOLE M8 HARD-H 12mm
033	981.500/50	BOX 50pcs. Ø 150mm PAD VELCRO MULTIHOLE M8 HARD-H 12mm
034	980.015N/50	BOX 50pcs. Ø 125mm PAD VELCRO 17 HOLES M8 HARD
034	980.015N/5	BOX 5pcs. Ø 125mm PAD VELCRO 8+8+1 HOLES M8 HARD
035	9.715	SCREW M8 x 16 T.B. ZINC-PLATED WITH WASHER